

Practical Local Circular Economy Enablement via Fully Recoverable Reusable Delivery Packages

David Ruth - Motogo Systems, Austin, Texas

3. Abstract

A core challenge in realizing a functioning circular economy lies in engaging the everyday citizen within the flow of reuse, repair, and material recovery. While circularity is often addressed through industrial or policy frameworks, its success ultimately depends on the ability of individuals to return, exchange, or reuse items without friction.

At present, this remains impractical: existing delivery and waste systems are optimized for one-way, single-use distribution and offer limited means for convenient reverse logistics from the home.

This paper explores a systems approach to enabling citizen participation in circularity through the deployment of fully recoverable, reusable delivery parcels that serve as a standardized medium for both delivery and return. These durable, electronically managed containers can be used hundreds of times, securely transporting goods to homes and recovering items for repair, refurbishment, or recycling.

Critically, they are recovered automatically after each use, eliminating dependency on consumer action for returns or packaging management. By embedding reverse logistics within the same infrastructure that already supports forward delivery, this approach transforms the household from a passive endpoint into an active node of circular material exchange. Goods, components, and materials can circulate efficiently between producers, consumers, and recovery facilities without generating packaging waste or logistical inefficiencies. The result is a low-friction, inclusive model of circularity that integrates seamlessly into existing daily routines.

The paper examines the system architecture and operational model supporting this concept, including parcel life-cycle design, traceability mechanisms, and local collection and redistribution loops. Comparative analysis highlights how reusable, fully recoverable packaging systems can achieve substantial reductions in carbon emissions, packaging waste, and reverse logistics costs relative to conventional disposal-based models.

This framework offers a pathway for municipalities, retailers, and service providers to engage citizens directly in material recapture and extended product use, without requiring behavioral change or specialized infrastructure. By closing the loop on delivery itself, the system enables a practical form of circular participation: where every doorstep becomes both a delivery point and a collection point within a regenerative local economy.

4. Introduction and Motivation

Circular economy principles—eliminating waste, circulating products and materials, and regenerating natural systems—are increasingly recognized as essential to national sustainability, resilience, and economic competitiveness (Ellen MacArthur Foundation, 2023; Montreuil, 2011). Yet daily household habits and logistical constraints persist as major obstacles for community-scale circularity.

A practical, frictionless solution must integrate with existing consumer habits (home deliveries) and offer secure, simple mechanisms for at-home returns and recovery.

Industries invest in recovery and recycling, but consumer logistics remain fragmented and inconvenient (StartUs Insights, 2025; PTS Corp, 2025). Items needing reuse, repair, or recycling accumulate in homes because returning them is burdensome: distant drop-off centers, mail-back programs, and complex local rules break the link between citizen intentions and real participation (Washington State Department of Ecology, 2023).

Global parcel volumes are projected to surge from 161 billion in 2022 to 256 billion by 2027, a 59% increase in five years (Pitney Bowes, 2022). The EU's Regulation (EU) 2025/40 mandates that by 2030, transport packaging (including e-commerce) must be 40% reusable, increasing to 70% by 2040 (EU Regulation 2025/40, Article 22).

Yet recycling remains challenged by low capture rates, contamination, and material degradation with each cycle. Plastic pouches account for 31.7% of e-commerce packaging weight (GlobeNewswire, 2025), and switching to paper merely substitutes one limited recycling stream for another. Meanwhile, Amazon's single-use optimization reduced damage 24% and costs 5% (Mordor Intelligence, 2025), demonstrating how systems rapidly lock into disposable models. The decisions made today will determine whether the industry achieves truly circular reuse or remains dependent on inherently limited recycling. With regulatory deadlines now set, delay is no longer an option.

Motogo proposes a system of fully recoverable, reusable parcels designed to fulfill these requirements, converting every doorstep into a two-way logistics node for meaningful, scalable circularity supporting various verticals.

5. Current State of the Technology Industry Uses

5.1 One-Way Packaging and Single-Use Systems

Most home deliveries rely on single-use packaging. Typically cardboard, plastic mailers, and envelopes which driving waste and burdening municipal services (McKinsey & Company, 2023; Atlas Molded Products, 2025). The industry's emphasis on speed and low-cost material inputs reinforces this single-use model.

5.2 Limited At-Home Reverse Logistics

Return systems are fragmented and consumer-dependent: printing labels, repackaging, and trips to drop-off points create significant friction (StartUs Insights, 2025; PTS Corp, 2025). Only subscription or retailer-specific programs provide consistent at-home collection, with coverage and integration gaps. An example of such a specific program is subscription-based www.ridwell.com offering “milkbox” home recycling. Most systems are retailer-specific and not practical outside major metro areas

5.3 Fragmentation of Return and Recycling Pathways

Consumers navigate a maze of systems for retail returns, electronics recycling, donations, and local recycling—undermining material recovery rates and discouraging broad engagement (Washington State Department of Ecology, 2023; StartUs Insights, 2025). Fragmentation discourages participation and reduces material recovery rates.

5.4 Reusable Packaging Programs—Gaps and Limitations

Industry pilots in food, meal kits, or warehouse logistics face low return rates, high loss, customer inconvenience, and narrow geographic adoption (Packnode, 2025; Metrobi, 2025). Most programs fail to achieve consistent, scalable cycles due to their reliance on user action.

Published studies show that recovery rates for reusable parcels typically range from 80–98% per cycle in best-case scenarios, with consumer-facing open systems often achieving only 80–90% recovery (Plastics Industry Association, 2025). Even at 98% recovery, considerable container attrition occurs over many reuse cycles. Open-system pilots log average lifecycles of only 5–20 uses per container before loss (Closed Loop Partners, 2024; Metrobi, 2025)—well below the 50+ cycles needed for optimal economic and environmental benefits (Mordor Intelligence, 2025).

5.5 Absence of a Standardized, Secure Home-Delivery Interface

Typical home deliveries are left unsecured and are exposed to theft, weather, and missed connections. Some homes utilize various forms of static parcel lockers that lack interface standardization between locker brand makers resulting in delivery staff confusion, delays and then ignoring the locker for the delivery. An inconsistency of locker method for reverse logistics package returns and the inability to electronically notify of delivery parcels status. Incompatibility with robotic systems for automated delivery (Montreuil, 2011; StartUs Insights, 2025) A standardized, secure interface—supporting both delivery and pickup—is essential for circularity, especially to support the future of robotic delivery. A standardized, secure interface—supporting both delivery and pickup—is essential for circularity. Motogo may open-source its patents to establish ISO-like universal standards, enabling multi-vendor adoption of the solution.

6. Motogo's Technology Approach

Motogo's system is architected for robust, closed-loop circular logistics—from the physical design of parcels to digital traceability and operational workflows. This approach offers a universal, recoverable parcel system designed to deliver goods and retrieve items for return, repair, recycling, or donation automatically and reliably, bypassing consumer friction.



Figure 1: Community Cluster Example



Figure 2: Hard Shell and Flex Reusable Parcels



Figure 3: Anchor Rail, first generation



Figure 4: Reusable Parcel Robotic Delivery Testing

Photos in Figures 1-4 provide examples of Motogo's system concepts. The system supports broad customization across material specifications, thermal capabilities, dimensions, and branding to address vertical-specific requirements including cold chain, pharmacy, food service, and e-commerce applications.

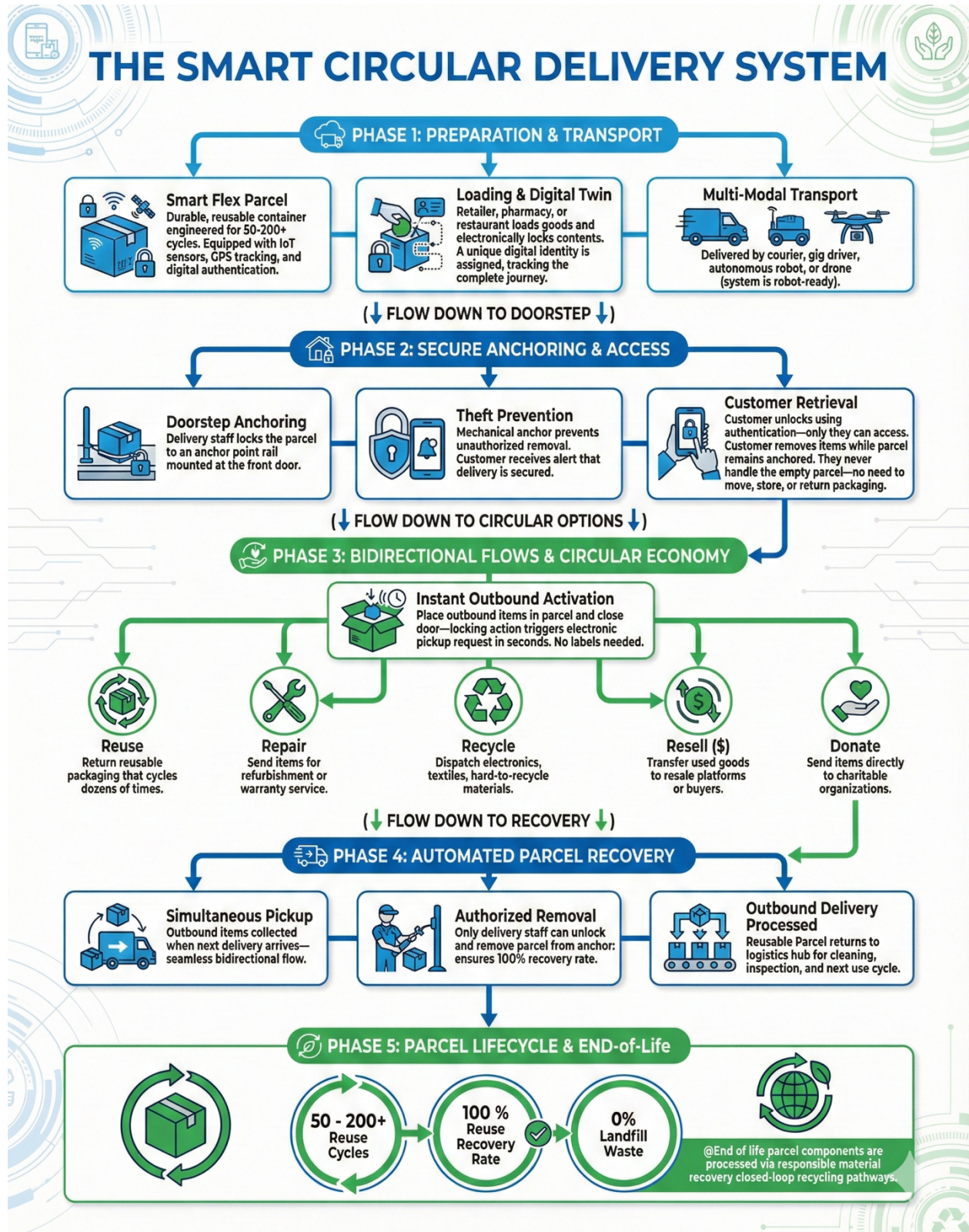


Figure 5: Motogo’s Smart Delivery System Flow Diagram Example

The Figure 5 flow diagram explains how the concept of the system functions and highlights how the Motogo system enables simplified reverse logistics for consumers to actively participate with the circular economy from their residence by employing reusable smart parcels. Figure 5 concepts are further explained in the following sections.

6.1 Parcel Life-Cycle Design

Materials and Longevity: Motogo Smart Flex Parcels, Figures 1 & 2, use durable materials engineered for 50-200+ cycles, withstanding mechanical stress, environmental exposure, and repeated secure access.

The parcels capabilities include:

- Weather-resistant materials protecting contents from environmental conditions
- Secure electronic locking, chain of custody and access control systems
- Sensors: Temperature, humidity, GPS, motion, light. Audio and LED for identification and location
- Standardized anchor point connection interfaces for secure connections to attachment rails and robots

Maintenance and End-of-Life: Each parcel is monitored for wear and performance via automation sensors. Proactive maintenance schedules and end-of-life recycling are triggered based on real-time data, maximizing asset utilization and ensuring circular closure of materials. Parcels are pulled, collected and sent for responsible end-of-life processing.

Digital Twin: Each parcel asset is assigned a unique digital identity, recording complete lifecycle data from manufacturing, through every delivery and recovery cycle, to refurbishment and recycling. This digital twin enables comprehensive tracking, compliance verification and reporting, and optimization of system performance.

6.2 Traceability Mechanisms

IoT and Cloud Management: All parcels are IoT-enabled, broadcasting real-time location, unlock events, access attempts, and operational status updates to a secure cloud dashboard. This provides complete visibility into parcel location, utilization patterns, and system health. Optional monitoring tiers are available such as precision location, temperature and humidity.

Authentication and Security: App-based or wireless authentication secures each access event, with robust anti-theft features and user notifications. Anomalous events—such as unauthorized access attempts or unexpected location changes—trigger instant alerts and enable rapid intervention. Optional Chain-of-Custody monitoring and reporting is available.

Compliance and Reporting: The system automatically captures and records data on use cycles, material flows, recovery events, and environmental metrics. This information is made available for Extended Producer Responsibility (EPR) compliance, sustainability reporting, and regulatory requirements.

6.3 Local Collection and Redistribution Loops

Standardized Anchor Rail Interface (Figs 1-3): At homes, businesses, campuses, or public sector sites, anchor rails guarantee secure placement and positioning for delivery or collection by human couriers or robotic systems. This creates a consistent, predictable interface that eliminates variability in last-mile logistics. Anchor interfaces are highly configurable per application: such as single-family homes, apartments, stores, or community clusters (Fig 1).

Automated Pickup Routing: Integrated logistics platforms optimize local pickup and redistribution operations—whether returning goods to retail stores, sending items to repair centers, transporting donations to charitable organizations, or collecting materials for recycling facilities. Each parcel is rapidly, uniquely electronically programmed for each delivery cycle, which activates the delivery courier service.

Neighborhood and Institutional Networks: Municipalities, universities, or commercial providers can deploy coordinated local loops using Motogo parcels, dramatically boosting local material recovery rates, enabling donation

flows, and improving micro-logistics efficiency across communities. The concentrated geographic density of parcels is desirable.

Reverse and Forward Integration: Parcels seamlessly support both forward logistics (goods delivery) and reverse flows (returns, donations, recycling) using consolidated routes and intelligent scheduling. This integration minimizes added transportation costs and environmental impact while maximizing system utilization.

6.4 Guaranteed Reusable Parcel Recovery

The anchor rail mechanically prevents customers from removing parcels—they authenticate to access contents but cannot detach the container. Only authorized couriers, people or robots (Fig 4), unlock parcels from anchors, eliminating the customer-dependent return step that causes 2-20% annual losses in conventional reusable programs.

Additional recovery success is supported by:

- Automated pickup workflows integrated with delivery operations
- Sensor-driven pickup verification and geographic GPS monitoring
- Compatibility with emerging robotic delivery systems (Fig 4)
- Digital tracking that maintains complete chain of custody

Because the parcel is always recovered, the system achieves near-zero asset loss, high reuse cycles, and predictable circular flows that enable the full economic and environmental benefits of reusable packaging.

7. Discussion of Motogo's Solution

Motogo's solution exemplifies circular systems architecture through thoughtful life-cycle management, comprehensive traceability, and high-performance local logistics loops. The system overcomes traditional barriers by making households, businesses, and campuses active, frictionless nodes of the circular economy.

Motogo has completed multiple beta iterations, producing and field-testing both hard shell and flexible smart parcels along with anchor rail variations. The software stack—including mobile apps for retailers, couriers, and customers, plus IoT firmware and cloud infrastructure—has been validated through real-world deliveries demonstrating positive acceptance. Motogo's next phase: pharmacy home delivery pilots focused on recurring medication cycles to demonstrate economic viability at scale

This solution strategically addresses the light parcel segment, which represents both the most practical implementation opportunity and the greatest potential for sustainability impact. With light parcels accounting for 76.29% of the U.S. domestic courier market in 2024 (Mordor Intelligence, 2025), focusing on this dominant segment enables circular economy adoption where volume and environmental impact are highest.

7.1 Enabling Citizen Participation with Simple Behavioral Change

Motogo leverages daily delivery routines (Figure 5) to create circularity channels while requiring no labels, minimal packaging preparation and no special trips from users. Citizens already engage with home delivery systems regularly. By integrating circular flows into these existing interactions, Motogo enables rapid shipping from the home:

- No box preparation and no printing of labels, the system utilizes digital labels
- Use available reusable parcel or request a reusable parcel to send items
- Place items to send into reusable parcel, lock the lid, identify destination, its ready
- Courier is activated for pickup
- No travel to drop-off centers, couriers come to you

This seamless integration leads to broad, natural adoption across diverse populations and contexts.

7.2 Zero-Loss Recovery vs. Industry Norms

Industry benchmarking reveals that even well-managed reusable packaging programs suffer asset loss rates between 2–20%, severely limiting the number of use cycles achieved and undermining economic viability. Motogo's system is engineered for automated, secure asset recovery at nearly 100%—vital for maximizing both economic and environmental benefits.

Table 1: Comparison of Recovery Rates and Use Cycles

Model Type	Recovery Rate	Use Cycles	Return Method	Asset Loss
Motogo System	~100%	50–200+	Automated, secure	Close to 0%
Industry Open	80–98%	5–20	Consumer-driven	2–20% per year

7.3 Lifecycle Realization and Economic Impact

Early modeling demonstrates that Motogo parcels reliably achieve 50–200+ delivery and recovery cycles before end-of-life—an order of magnitude improvement over current consumer reuse pilots. A three-year total cost of ownership (TCO) analysis reveals significant economic advantages for Motogo's system, contingent on high recovery and reuse rates.

Table 2: 3-Year Total Cost of Ownership Comparison (0% Loss Rate)

Uses/Year	3-Year Uses	Single Use TCO	Motogo TCO	Per-Use	Savings
50	150	\$172.50	\$98.00	\$0.65	\$74.50
100	300	\$345.00	\$146.00	\$0.49	\$199.00
150	450	\$517.50	\$194.00	\$0.43	\$323.50
200	600	\$690.00	\$242.00	\$0.40	\$448.00

Motogo's approach reduces single-use packaging purchases, reverse logistics labor costs, failed delivery expenses, retailer returns processing time, and municipal waste management burdens. Preliminary System modeling indicates 20–40% cost improvements over existing reverse logistics approaches.

7.4 Environmental Performance

With reliable recovery and high use cycles, Motogo's fully recoverable system achieves substantial environmental benefits compared to conventional single-use packaging:

Table 3: Environmental Performance Comparison

Metric	Motogo System	Industry Average
Waste Reduction	Up to 70%	30–50%
CO2 Emissions Reduced	Up to 60%	20–40%
Recovery Rate	Near 100%	80–90%
Compliance/Reporting	Automated, verified	Manual/partial

By achieving the full designed reuse cycles, the system delivers sharp reductions in packaging waste, increased recovery of reusable materials, lower transportation emissions via consolidated pickups, and increased reuse and refurbishment rates. Communities can move from incremental recycling improvements toward regenerative resource flows.

7.5 Traceability and Security

Live cloud dashboards and parcel-specific alerts ensure loss rates approach zero, with rapid action on exceptions. The system provides complete data for compliance verification and operational analysis, enabling:

- Real-time location and status monitoring
- Automated EPR and sustainability reporting
- Theft deterrence through secure authentication
- Predictive maintenance scheduling
- Performance optimization through data analytics

7.6 Local Loop Efficiency

Automated collection and redistribution at every doorstep, business, or public site creates predictable material flows—improving recovery rates, enabling targeted reuse and recycling, and supporting adaptive routing as neighborhood needs evolve.

Table 4: System Architecture and Operational Efficiency

Feature	Motogo System	Industry Typical
Lifecycle Cycles	50–200+	5–20
Real-time Traceability	Yes (IoT, Cloud)	Partial, batch-based
Local Recovery Loops	Embedded, universal	Limited, fragmented
Redistribution Efficiency	Automated, scheduled	Ad hoc, manual

7.7 Implications for Municipal, Retail, and Industry Adoption

Table 5: Stakeholder Benefits Across Sectors

Sector	Motogo System	Standard Model
Municipalities	At-home recovery channel	Drop-off, variable
Retailers	EPR compliance, lower costs	Customer-driven returns
Manufacturers	Reliable component recovery	Fragmented recovery
Robotics	Standardized anchor, secure	Unpredictable

Municipalities gain standardized, low-cost at-home recovery channels that increase participation rates and reduce contamination in recycling streams.

Retailers achieve EPR compliance pathways, reduce returns processing costs, and enhance customer satisfaction through convenient return options.

Manufacturers gain reliable access to returned components for refurbishment, remanufacturing, or recycling, supporting circular product design strategies.

Robotics companies benefit from a standardized interaction point for future autonomous delivery systems, enabling precise positioning, secure exchanges and higher resource utilization.

7.8 Contribution to National Supply Chain Resilience

Motogo's system directly supports the REMADE Institute's objectives by:

- Reducing reliance on virgin materials through maximized reuse
- Increasing domestic circular material flows and local recovery
- Creating distributed recovery networks that enhance resilience
- Reducing vulnerability to upstream supply chain disruptions
- Enabling local reuse and repair ecosystems that strengthen communities
- Supporting manufacturing competitiveness through reduced material costs

8. Conclusions and Recommendations

Motogo's recoverable reusable parcel system provides a high-impact method for enabling citizen participation in circularity. By embedding reverse logistics into standard home delivery operations and providing a standardized home interface, the system reduces friction in consumer participation, reduces packaging waste, increases recovery rates for valuable materials, and enhances national resilience and sustainability.

The system provides actionable pathways for retailers, municipalities, and service providers to advance circular economy objectives with minimum behavioral change from citizens or specialized infrastructure investments.

Motogo is actively seeking industry partners for a 2026-2027 pilot deployment in the following strategic vertical:

Pharmacy Home Delivery: Recurring medication deliveries provide predictable, frequent cycles ideal for demonstrating economic viability. Partner pharmacies gain differentiation and EPR compliance pathways.

8.1 Recommendations for Stakeholders

Municipalities should pilot neighborhood-scale circular logistics loops using reusable parcels to improve recovery rates and reduce waste management costs.

Retailers should adopt recoverable packaging in their e-commerce and returns workflows to achieve EPR compliance and reduce operational costs.

Robotics companies should align development efforts with standardized anchor interface specifications to enable future autonomous circular logistics.

Policymakers should encourage infrastructure supporting at-home circular logistics through incentives, standards development, and regulatory frameworks.

Researchers should investigate optimized routing algorithms, refining reuse environmental modeling, material durability enhancements, and system integration models to further improve circular logistics performance.

9. Acknowledgements

The author acknowledges the contributions of team Motogo, its partners, and the broader community of retail, municipal, and robotics collaborators who provided insight, feedback, and operational perspective. Special appreciation is extended to the REMADE Institute and Ellen MacArthur Foundation for their leadership in advancing circular economy thought and practice.

10. References

Montreuil, B., Toward a Physical Internet: meeting the global logistics sustainability grand challenge, *Logistics Research*, 3(2-3), 71–87 <https://doi.org/10.1007/s12159-011-0045-x>, 2011

Ellen MacArthur Foundation, Reusable packaging business models, <https://www.ellenmacarthurfoundation.org/reusable-packaging-business-models>, 2023.

McKinsey & Company, The potential impact of reusable packaging: Environmental and economic analysis, <https://www.mckinsey.com/industries/packaging-and-paper/our-insights/the-potential-impact-of-reusable-packaging>, 2023.

Plastics Industry Association, Metrics to gauge performance in reusable plastic packaging, <https://www.plasticsindustry.org/articles/examining-metrics-gauge-performance-reusable-plastic-packaging>, 2025.

Washington State Department of Ecology, Recycle, reuse, and source reduction target study, <https://apps.ecology.wa.gov/publications/documents/2307060.pdf>, 2023.

Closed Loop Partners, How durable does reusable packaging need to be?, <https://www.closedlooppartners.com/debunking-durability-how-durable-does-reusable-packaging-need-to-be/>, 2024.

Mordor Intelligence, US and Europe reusable plastic returnable transport packaging market, <https://www.mordorintelligence.com/industry-reports/us-and-europe-reusable-plastic-returnable-transport-packaging-market>, 2025.

Atlas Molded Products, Trends impacting sustainable & recyclable packaging, <https://www.atlasmoldedproducts.com/blog/sustainable-recyclable-packaging-trends-2025>, 2025.

StartUs Insights, Top 10 reverse logistics technology trends & innovations, <https://www.startus-insights.com/innovators-guide/reverse-logistics-technology-trends/>, 2025.

PTS Corp, Reverse logistics insights 2025, <https://www.ptscorp.com/blog/aftermarket-services/reverse-logistics-insights/>, 2025.

Packnode, Reusable packaging strategy marks five years of progress in fresh produce, <https://www.packnode.org/en/sustainability/reusable-packaging-progress-fresh-produce>, 2025.

Metrobi, Why Reusable Packaging Matters: Research-Backed Insights for 2025, <https://metrobi.com/blog/reusable-packaging-trends-for-local-businesses/>, 2025.

Pitney Bowes. Parcel Shipping Index, 2022, <https://www.pitneybowes.com/content/dam/pitneybowes/us/en/shipping-index/parcel-shipping-index-ebook.pdf>

[GlobeNewswire, Trends & Strategies Shaping the ecommerce Packaging Market 2025-2030: Revenues Forecast to Reach \\$264 Billion by 2030, 2025.](#)

European Union. "Regulation (EU) 2025/40 of the European Parliament and of the Council of 19 December 2024 on Packaging and Packaging Waste." *Official Journal of the European Union L*, no. 2025/40, 2025. <https://eur-lex.europa.eu/eli/reg/2025/40/oj/eng>

11. About the Author

David Ruth is the Founder and CEO of Motogo Systems. With over 30 years of experience in technology leadership, computer systems, and sustainable delivery innovation, he leads the development of reusable, fully recoverable parcel technologies for circular economy enablement. His work focuses on creating practical, scalable solutions that integrate seamlessly into existing logistics infrastructure while advancing environmental sustainability and economic resilience.